

MEMBERS CIL FUNDING REQUEST FORM

AREA COMMITTEE – MEMBERS CIL FUNDING REQUEST		
MEMBER	Cllr Lachhya Gurung	
DATE	13/04/2023	
WARD	Edgwarebury	
SCHEME SUMMARY		
<p>The replacement of two items of play equipment in Edgwarebury Park. The zip line and swings set both unexpectedly failed safety inspections last year before their scheduled end-of-life. This scheme would reinvigorate the Edgwarebury Park playground for the next generation of children with replacement items guaranteed to last a lifetime.</p>		
Funding Request (£)	£27,000	
CIL Eligibility	<p><i>Both councillors and officers have received a high volume of feedback from park users stressing their previous enjoyment of the play items and requesting their reinstatement. Park users preferred a restoration of the existing items instead of alternative proposals.</i></p> <p><i>Though on the periphery of the borough, Edgwarebury Park enjoys good transport links and offers residents a traditional park experience of peaceful enjoyment. In addition to the playground there are sports facilities including football pitches and tennis courts, a traditional rose garden, wildflower meadow and woodlands.</i></p>	
Area Committee priorities	<p><i>The Barnet Plan 2021-25 > Clean, Safe and Well Run > Unlocking the potential of parks and open spaces.</i></p> <p><i>The zip line particularly was a main attraction of Edgwarebury Playground, contributing to the park being a well-used, vibrant place enjoyed by families. Restoring key features of the playground will have positive knock-on effects to enjoyment and safety in Edgwarebury Park and the surrounding area.</i></p> <p><i>Active play contributes positively to children's physical development. Being outdoors and taking regular exercise are particularly important for children, helping them maintain a healthy weight and good mental health.</i></p>	
Who will deliver the scheme	Greenspaces Team	
Community Grants (if applicable please confirm this is included with the application)	N/A	
Feasibility Study only	N/A	
BUDGET & DELIVERY		
Item	Description	Cost
Main works	Removal of damaged zip line and swing set, replacement with new items. Main quote attached in the supporting documentation	£23,446.45
Project management	Cost of Greenspaces management of the project @ 5%	£1,172.32
Contingency	Contingency @ 10%	£2,344.64
TOTAL		£27,000
Quotes provided with the application	<i>Attached as a separate document</i>	

Timescale for delivery	<i>Installation to take place for over a 2-week period September/October 2023</i>
Council Service Delivery	<i>Richard Young Greenspaces Development Officer</i>
Dependencies/Risks	<i>Minimal as items are being replaced. Some minor risks relating to timescales and the volume of work Kompan are delivering in the borough. Ensure stakeholders are updated with realistic completion dates from Kompan</i>
VALUE FOR MONEY	
How does your scheme offer good value for money?	
<ul style="list-style-type: none"> • No additional costs are imposed on the council, as the maintenance of the decommissioned items being replaced is accounted for. • Lifetime warranties issued on structural items 	
No ongoing revenue costs	<i>Richard Young, Greenspaces Development Officer, confirms that the service can be supported from existing revenue budgets</i>
COMMUNITY BENEFITS	
<p>This scheme is in response to the high volume of in-person, telephone and email feedback to councillors and officers from park users demanding the replacement of the play items.</p> <p>With regards to environmental impact, in terms of lifecycle analysis, investing in equipment which will last decades will spread the carbon cost of construction.</p> <p>Please ensure that the scheme has considered <u>equalities and diversity</u> and relevant protected characteristics as outlined under the Equalities Act 2010.</p> <p>The scheme has considered equalities and diversity, Greenspaces team to request the addition of an inclusive swing to the swing set.</p>	
Lead Officer Review - only	
Lead Officer	
Date	
Assessment & Recommendations	



Sales - Budget Quote

Mr. Richard Young
London Borough Of Barnet
Recreation And Parks
2 Bristol Avenue,
Colindale
London
NW9 4EW

Quote No. SQ279366-1
Sell-to Contact No. 32495
Quote Date 01-03-2023
Expiration Date 31-03-2023

Salesperson Sandra O'Sullivan
E-Mail sanosu@kompan.com
Phone No. 07309 594590

Project Name EN96575 Edgwarebury Park, HA8 8QJ

No.	Description	Quantity	Unit of Measure	Unit Price	Amount
	Scope of works				
	Break out swing and cableway including disposal				
	Supply and Install new swing including seats				
	Patch repair wet pour				
	Supply and Install new cableway & launch platform				
	Patch repair wet pour				
	Lay new wet pour under old cableway launch				
	Chase cut into existing tarmac				
	Chase cut into existing wet pour				
	Break out cableway rear				
EN-DIG SWING 2S	Dig Out & Remove 2 Seat Swing Incl. DSP Break out cableway front	1	Pieces	225.00	225.00
EN-DIG SWING 2S	Dig Out & Remove 2 Seat Swing Incl. DSP Break out cableway platform	1	Pieces	225.00	225.00
EN-DIG SWING 2S	Dig Out & Remove 2 Seat Swing Incl. DSP Break out swing frame	1	Pieces	225.00	225.00
EN-DIG SWING 2S	Dig Out & Remove 2 Seat Swing Incl. DSP Supply Equipment	1	Pieces	225.00	225.00
KSW90016-0909	KOMPAN Swing Frame, 2.5m high, c/w antiwrap brgs 2 flat seats, galvanised steel, inground 90cm	1	Pieces	1,910.00	1,910.00
					
INSTALLATION	Installation - KSW90016-0909 KOMPAN Swing Frame, 2.5m high, c/w antiwrap brgs	1	Pieces	800.00	800.00
SW990026-01	KOMPAN Cradle Swing Seat, 2.5m hgh c/w 6mm HDG chains	2	Pieces	240.00	480.00
					

No.	Description	Quantity	Unit of Measure	Unit Price	Amount
INSTALLATION	Installation - SW990026-01 KOMPAN Cradle Swing Seat, 2.5m hgh	2	Pieces	45.21	90.42
M87212-3817	KOMPAN Cableway for Level Site Inground 109cm	1	Pieces	7,400.00	7,400.00
INSTALLATION	Installation - M87212-3817 KOMPAN Cableway for Level Site	1	Pieces	2,133.33	2,133.33
PCM102300-0902	KOMPAN Cableway Start Station	1	Pieces	3,010.00	3,010.00
INSTALLATION	Installation - PCM102300-0902 KOMPAN Cableway Start Station	1	Pieces	298.00	298.00
<p>Wet Pour Works Patch repair Swing Legs Patch repair Cableway Legs x 4 Lay Wet Pour 40 mm thick location of old platform Wet Pour under cableway 6 m x 3 m Chase cut in tarmac / upto existing wet pour</p>					
EN-WPDAYRATE	Wet Pour Dayrate	1	Pieces	1,910.71	1,910.71
EN-EDGE CHASE CUT	Chase Cut for Wet Pour	18	Metre	11.20	201.60
<p>Prelims Heras Fencing around swing, 4 sides, 28 m Heras Fencing around cableway, 3 sides, 31 m Skip Container Telehandler Kompan to use onsite toilet</p>					
EN-HERAS	Heras Fencing Unload, Erect & Dismantle	59	Metre	7.68	453.12
EN-HERASMIN	Heras Fencing Delivery & Collection Rate	1	Pieces	157.28	157.28
EN-HERASWK	Heras Fencing Hire Per Week	59	Metre	2.14	126.26
EN-TELEHANDLER	Telehandler Hire for 1 Week	1	Pieces	878.57	878.57
EN-SECUR1	Storage Container (6mx2.4m)-4wks Min Charge	1	Pieces	965.18	965.18
EN-SKIP	Skip Hire 8 Cy Mixed Waste (Not Rubber)	1	Pieces	507.98	507.98
FREIGHT	Freight	1	Pieces	1,224.00	1,224.00
Total GBP Excl. VAT					23,446.45
20% VAT					4,689.29
Total GBP Incl. VAT					28,135.74

Area Committee – Neighbourhood CIL Funding Application Form

Title								
Raised by (Councillor):	Whysall							
Ward:	High Barnet							
Member Request:	Installation of geo-grid system on the drop kerb area							
Funding Requested (£):	£2,200.00							
<p>In consultation with (e.g. named Officer):</p> <ul style="list-style-type: none"> • Is within the parameters outlined in CIL statutory and regulatory definitions • Falls within the CIL Funding Priorities agreed by the relevant Area Committee • Links to priorities in any existing Council policy or strategy and/or whether any insight and intelligence may support the application • The scheme has considered any potential impact on the Council's Strategic portfolio including those considered for strategic CIL funding • The scheme has no ongoing incremental revenue costs to the Council • That the scheme budget is forecast accurately • That the scheme deliverability has been assessed to ensure it can be resourced and successfully implemented • That the scheme outcomes and benefits have been assessed including benefits for the wider community and/or including those with protected characteristics under the Equalities Act 2010 <p>And Area Lead Officer (NAME), on (DATE):</p>	<p>In consultation with Rob Wiltshire</p> <p>The field next to Byng Playing Fields and Christ Church Primary School which is used for parking for events such as the Medieval Festival and the Rugby Festival held on the Playing Fields has a drop kerb area for accessing the field to park. The usage in the last few years is leading to erosion of the area and issues with vehicles access and exiting the field. The proposal is to install a geo-grid system to stop the erosion and make it easier for vehicles to access the field. This will stop vehicles mounting the kerb elsewhere and causing damage to the field in other areas.</p> <p>The Playing Fields are used by the Medieval Festival and Rugby Festival and has a capacity of approximately 400 cars. Therefore when used the traffic is intense. The Rugby Club is submitting an application to develop their club house which is likely to lead to more events requiring overflow parking in the area.</p> <p>By reinforcing the drop kerb are the integrity of the field can be maintained for public use and reduce damage to the grass and kerb area.</p>							
Any additional information (please list any documents here to be published with the agenda, or circulated to the Committee):	<table border="1" style="width: 100%; border-collapse: collapse;"> <thead> <tr> <th style="text-align: left;"><i>Description</i></th> <th style="text-align: left;"><i>Cost</i></th> </tr> </thead> <tbody> <tr> <td>Quote for plastic grid system installation</td> <td>£1900.00</td> </tr> <tr> <td>Project management costs (officers time in the</td> <td>£95.00</td> </tr> </tbody> </table>		<i>Description</i>	<i>Cost</i>	Quote for plastic grid system installation	£1900.00	Project management costs (officers time in the	£95.00
<i>Description</i>	<i>Cost</i>							
Quote for plastic grid system installation	£1900.00							
Project management costs (officers time in the	£95.00							

	Greenspaces Team, 5% of quote)	
	10% contingency for the whole scheme	£199.50
	TOTAL	£2194.50

Telephone: 01707 872099
Bob Bush: 07958 630319
Email: bws@bwservices.uk.com

10th March 2023

London Borough of Barnet

Ref: BWS/RW/0148

For the attention of **Rob Wiltshire**
Greenspaces Development Officer

Email: rob.wiltshire@barnet.gov.uk

ESTIMATE

BYNG FIELD ENTRANCE

- To supply labour and equipment to remove the topsoil for the new entrance to the field 5m x 4.5m.
- To supply labour and equipment to install a plastic reinforcing mesh.
- To supply labour and equipment to level and compact MOT type 1 over the area and compact.
- To supply and instal plastic geo-grids on top of the type 1 base and fix in place.
- To supply labour, equipment and materials to fill the grids with topsoil, compact the soil, then seed with amenity grass seed / soil mix.

FOR THE SUM OF £1900.00 PLUS V.A.T.



MEMBERS CIL FUNDING REQUEST FORM

AREA COMMITTEE – MEMBERS CIL FUNDING REQUEST	
MEMBER	Cllr Tim Roberts
DATE	Mar-2023
WARD	Underhill
SCHEME SUMMARY	
<p>Design and construction of 4 new ECB/FA regulatory sized changing rooms and shower and toilet facilities for men, women and juniors of all ages and abilities. The community group are requesting partial funding for the overall scheme and have secured the balance of the funding.</p> <p>Please note that the scheme requires planning permission and that this scheme can only be approved funding by the Area Committee – subject to successful planning permission being received. Funding will only be released at that point.</p>	
Funding Request (£)	£168,000
CIL Eligibility	<i>The scheme is a construction project delivering new infrastructure and is eligible for CIL funding.</i>
Area Committee priorities	<i>The Area Committee is due to set its priorities. The support of the development of assets in greenspaces which provide facilities for the wider community to access has always been a priority and expected to continue. This application is supported by the Committee Chair.</i>
Who will deliver the scheme	<i>The Community Group have developed the plan to deliver this scheme – Old Elizabethians</i>
Community Grants (if applicable please confirm this is included with the application)	<i>The community group have completed the grant application process</i>
Feasibility Study only	<i>N/A</i>
BUDGET & DELIVERY	
<p>The overall budget is £204,935.88 and the community group have raised £36,935.88 and are requesting £168,000 from the Area Committee.</p> <p>The community group have confirmed the scheme for delivery with Barnet Estates (the landlord) and with Greenspaces & Leisure (on the design).</p> <p>The community group have also reviewed the scheme with the ECB, Middlesex Cricket and Sports England but have not been successful in obtaining additional funding sources.</p>	
Quotes provided with the application	<i>Provided below: KM Shinnock Ltd - £203,105.20 RB Maintenance Ltd - £204,935.88</i>
Timescale for delivery	<i>Tbc when planning has been confirmed – estimates are for a 4-5 month scheme</i>
Council Service Delivery	<i>n/a – but the design has been reviewed by Greenspaces & Leisure/</i>
Dependencies/Risks	<i>Dependency on planning permission</i>
VALUE FOR MONEY	
<p>How does your scheme offer good value for money?</p> <ul style="list-style-type: none"> The community group have sourced two competitive quotes through a tendering exercise. 	

No ongoing revenue costs	<i>None</i>
COMMUNITY BENEFITS	
Please review the detailed scheme proposal provided by the community group – provided below.	
Lead Officer Review - only	
Lead Officer	Cassie Bridger
Date	
Assessment & Recommendations	<p><u>Please note that the scheme requires planning permission and that this scheme can only be approved funding by the Area Committee – subject to successful planning permission being received. Funding will only be released at that point.</u></p>



Rida, Salar

1 Table of Contents

2	Memorial Playing Field	12
3.1	Old Elizabethans Cricket Club	13
3.2	Gunnersbury Women’s Cricket Club.....	14
3.3	Whetstone Wanderers Football Club	15
3.4	Old Stationers Football Club	15
4	Community Involvement	16
4.1	Community Cricket	16
4.2	School visits.....	16
4.3	Barnet Schools cricket festival	17
4.4	Cricket Camps	17
4.5	Summer Soulstice	17
4.6	Fit and Active Barnet.....	17
5	The Project.....	18
5.1	Benefits	18
6	Testimonials.....	20
7	Proposed renovation	22
8	Costs	25
9	Appendix.....	26

The Old Elizabethans Memorial Playing Fields was founded in 1953 and is a multi-sport facility with both Football and Cricket teams playing sport all year round. We boast five outdoor grass football pitches, two cricket pitches, a 4-lane outdoor cricket net and have just recently completed the installation of an all-weather AstroTurf football pitch. To service this facility, we have a clubhouse with a kitchen, bar area, toilets, showers, four changing rooms and a car park for approx. 120 cars.

The vision for the board is that the Memorial Playing Fields are a place for the local community to have the chance to play sport, be active, stay healthy, or just to socialise with friends.

(Pictures of the site can be found in the appendix)

3 Sports clubs and Teams

4 Old Elizabethans Cricket Club

Old Elizabethans Cricket Club, originally founded in 1935, is a flourishing cricket club operating out of the Memorial Playing Fields. Whilst originally created for old boys of the local school, the club has long been open to all the community and now has a rich and diverse membership. The club is proud to have both a thriving junior and senior membership drawn from across the borough and beyond.

The club has over 120 junior members, operating teams from under 9 years old up until under 17 years old. Across the summer months, we will have approx. 120+ juniors training on Friday evenings, led by a skilled team of coaches and parent volunteers. The club's junior sections have been phenomenally successful winning various regional age-group divisional titles as well as ECB competitions. In recent years, we have been pleased to be able to expand this section, continuing to offer coaching and fixtures up until U21 level. One of most exciting developments has been creating a girl's cricket team, who represented the club in a girl's league competition for the first time in 2022. We have produced many boys and girls of various ages participating in Middlesex and Hertfordshire County Age Group programmes, including the Middlesex Disability Squad. We have also seen a large increase membership from within the South Asian community in recent years; it is pleasing to see the club able to serve this (and other) minority groups in Barnet. They are also a rich source of talented cricketers!

The club's senior section has also flourished and developed across recent years. The First XI will be playing in Hertfordshire Division One in 2023, the highest level the club has ever reached. Our last two seasons have seen back-to-back promotions as the team has gone from strength to strength. As a club, it is hugely pleasing to see the number of former juniors representing the team, with 8-9 of the regular starting team having represented OEs as children. The team have also made themselves regulars in the latter stages of the Hertfordshire T20 trophy- winning the Plate in 2022, competing in the Cup Finals Day in 2021 and winning the tournament in 2019.

Old Elizabethans Cricket Club merged with Barnet Cricket Club in 2012, after the disbandment of Barnet CC. Barnet CC saw a number of high-profile cricketers make it to national and international stages, players such as Eoin Morgan (Ex-England Captain and World Cup winner), Adam Rossington (England U19, Middlesex, Northants, Essex, London Spirit), Josh Knappett (Middlesex, Worcestershire) Rohan Gavaskar (India) have all passed through the doors of the original Barnet Cricket Club.

Beyond the First XI the club has a strong adult membership. We have 2nd and 3rd XIs who play every Saturday across the season. Our home facility will regularly have two simultaneous matches going on in the summer and we have realistic aspirations towards having a 4th XI in the medium term. These teams have members with a wide range of abilities and interests in cricket, with playing members in 2022 ranging in age from 13 to 68! The community feel of the club is supported with regular social events that include both junior and senior members. Our end of season club day sees sixty-six people playing cricket - including juniors, senior players, parents, friends, and social members.

The club is immensely proud of its part in the local community and aims to continue to grow in future years. As well as targeting success on the field, we will continue to look to grow our membership to represent people of all ages, backgrounds, and abilities in cricket.

(Pictures can be found in the appendix)

5 Gunnersbury Women's Cricket Club

Gunnersbury Women's Cricket Club was founded in 1925 and first played at a school in Gunnersbury Lane, before moving to Brentford, then Ealing, and on to Finchley. The club is proud to accompany its long history with a successful record on the field with a number of players competing at international, national, and regional levels as well as winning national and county leagues and cup competitions.

We currently run two female sides with over forty members and field a first team in the Southern Premier League and the ECB National T20 cup as well as a second team in the Middlesex Sheila Hill League.

Our club is in its 98th year and as we approach our centenary, we are excited to be developing a solid relationship at Old Elizabethans Cricket Club in Barnet. Our first season working in partnership was one of the most emphatic in Gunn's history, where our first XI achieved an extraordinary double, firstly winning the ECB T20 Vitality Cup in August and then securing the Women's Cricket Southern League Premiership title. Our second team secured fourth place in their Middlesex league with a number of younger players making their debut, proving the opportunities for girls to develop as part of a wider local community club.

Gunnersbury Women's Cricket Club has a history of developing talent stretching back as far as 1934 when two Gunn's players, M. Taylor, and D. Turner, represented England on the inaugural women's tour to Australia. More recently, current club chair, Beth Morgan, represented England between 1999 and 2013, winning the 2009 T20 World Cup, the 2009 World Cup and 2005 and 2008 Ashes, as well as Sophia Dunkley being a member of the England team playing in the West Indies this winter and Molly Barbour Smith playing for Scotland U19 in the inaugural U19 World Cup in South Africa in January. The first team has players who represented Holland, Scotland, Hong Kong, and Ireland. Providing a high-quality playing environment, including coaching, facilities, and match opportunities, has been integral to individual development. International players from the past who have played for Gunnersbury WCC include, Charlotte Edwards, Danni Wyatt and most recently in The Hundred competition Naomi Dattani. Links to junior female teams have also been important and the partnership with the Old Elizabethans girls' team is vital moving forward to drive interest in the game as well as creating a pathway with a variety of playing opportunities at diverse levels depending on an individual.

Gunnersbury's partnership with Old Elizabethans has started extremely positively with significant support from the men's side of the club over the last 12 months. This ranges from help with ground preparations, securing external sponsorship and liaising with the Playing Fields Committee regarding facility access. This support has been vital to continuing the momentum and success of the female sides during a significant period of change for Gunnersbury WCC.

However, the changing facilities have been one area requiring significant improvement according to players; this has impacted on the playing experience and enjoyment of the competitors. The changing rooms and particularly the showers are of a significantly lower quality than the facilities of other teams in the leagues, with players often preferring not to use the facilities or leaving the match without using the pavilion at all.

(Pictures can be found in the appendix)

6 Whetstone Wanderers Football Club

Whetstone Wanderers FC (WWFC), formed in 1991, is a football club focused on children of all ages and have been playing at the Memorial Playing fields for over 15 years. WWFC are affiliated with the FA and Football foundation and have community status as a football club. WWFC are one of two North London Arsenal FC partner club providing juniors with a pathway into professional sport.

The club have a proud junior membership base of over five hundred children as of 2022, with 36 boys' teams, 2 girls' teams, 1 disability team and 4 adult teams; a total of 43 football teams whom all play at Old Elizabethans Memorial Playing Fields.

The vision for the club is to introduce more girls' teams in younger age groups and maintain a club for children of all ages within the borough to play football without any financial restriction.

Within the community WWFC hold charity tournaments for local children and schools to enter as well and charity work in partnership with Noah's Ark Children's Hospice where we provide Christmas presents for patients and siblings through our 'Gift of giving initiative.'

WWFC would also benefit hugely from an improvement in changing facilities at the ground. Being a predominantly junior club it is very important that they cater to the demands of junior players of all genders, ethnicities and backgrounds.

7 Old Stationers Football Club

Old Stationers FC, formed in 1906, are an adult football team playing their home fixtures at the Memorial Playing fields. Stationers are a club with an illustrious history, with league titles that span over 116 years. The club's competitive pinnacle came during the 1970s-1990s where they were playing in the highly competitive Southern Amateur League. At this point they were able to regularly field up to nine teams every Saturday, involving vast numbers of members and players.

Stationers currently have one team who play the Senior Division 2 of the Southern Amateur League. The club is vibrant socially and holds a number of events to fundraise, many of which are based in the clubhouse at the Memorial Playing Fields. These events not only attract players but many family members and children.

As the club looks to the future it will continue offering opportunities for local players to compete in 11 a side football. Despite a tough national outlook for adult footballing participation, the club is continuing to thrive and aspires of expansion in the future. Stationers are hoping to return to being a multi team club, with more opportunities for involving non players in the wider club picture.

9 Community Cricket

All Stars Cricket Programme is an ECB backed initiative which the Memorial Playing Fields supports by providing a fantastic first experience for all children aged 5-8 years old in Barnet, where they're guaranteed 8 weeks of jam-packed fun, activity and skills development. The programme is designed to introduce children to the sport, teaching them new skills, helping them make new friends and have a great time doing so. The sessions are open to the public and local community. We provide qualified coaches, equipment and planned sessions to ensure the children have access to all the facilities they require to take part. We are currently working with the 'Get Active' Barnet team to look at advertising these session through the Barnet activity websites.

Dynamos Cricket Programme is also an ECB backed initiative which the Memorial Playing Fields supports by providing a fantastic next step for all those graduating from All Stars Cricket and the perfect introduction for all 8-11 year-olds new to the sport. Complementing junior cricket, Dynamos provides children with a more social offer focused on developing fundamental movement skills and applying them in an exciting game of countdown cricket. These sessions are also open to the public and local community. We are currently working with the 'Get Active' Barnet team to look at advertising these session through the Barnet activity websites.

Old Elizabethans Cricket Club host cricket training sessions for girls within Barnet. Alongside this they found that 'mums' would often stay behind and watch the training sessions whilst waiting for their children. **They saw an opportunity and organised a game of 'Kwik cricket' for the mums to play whilst their children were attending the formal training session and this became a huge success.** They now organise and facilitate women and mum's with a weekly game of 'Kwik cricket' at the grounds to provide an introduction to the sport as well as a general fitness and well-being opportunity for parents. Last season the attendance of these session grew from a starting point of 6-7 mums to a 15 person session at its height. Working alongside the 'Fit and Active Barnet' scheme, the club will be looking to grow this opportunity to a community offering as well as increasing the number of sessions hosted through the week.

10 School visits

Both Old Elizabethans and Gunnersbury Women's Cricket Clubs have dedicated time and resources to growing the game of cricket in the local community. One way in which both action this promise is by visiting schools in the local areas to introduce the sport to children, promote cricket and provide children and parents with information on how and where cricket is available to them in the local area. Schools such as Foulds, St. Catherine's, Queen Elizabeth Boys, Finchley Catholic, East Barnet, Underhill, Hadley Wood Primary, Monken Hadley, Christchurch, and Woodside Park have all benefited from visits from members and coaches for talks on cricket as well as actual voluntary coaching sessions run by our members and supported by Middlesex's Participation Programme.

11 Barnet Schools cricket festival

Over the past 10 years Old Elizabethans Memorial Playing Fields has hosted the Barnet School's Cricket Festival on an annual basis. This brings together over 20 schools who come down to the playing fields to participate in a full day of cricketing competitions as well as participation games. Approximately 300 children of all ages take part in the day which is completely free of charge and managed by the members of the cricket club on a voluntary basis.

12 Cricket Camps

Old Elizabethans provide several Cricket Camps throughout the year during school holidays for children to attend. These are run Monday to Friday through Half terms, Easter, and Summer breaks where children of all ages and abilities take part in action packed days all geared around the introduction and progression of cricketing skills.

13 Summer Solstice

The Barnet Summer Solstice has become an integral part of the summer calendar within Barnet and Old Elizabethans Memorial Playing Fields has been the host venue since its inception in 2007. The Solstice has raised over £400,000 thus far for local initiatives with the primary focus being raising money for Cherry Lodge Cancer Care Home. With over 4500+ people attending the festival on the day it has become a well-known event nationwide.

14 Fit and Active Barnet

In recognition of the boroughs ambition to create a 'more active and health borough' as set out in the Fit & Active Barnet Framework (2022-2026), The Memorial Playing Fields Committee has recently met with the boroughs Greenspaces and Leisure team to establish strategic links in with the Fit & Active Barnet agenda.

Initial ideas were discussed such as promotion of the club and its opportunities on the Get Active activity finder and via the [Fit & Active Barnet Hub](#); supporting the annual Get Active. Give it a Go! campaign through offering free/low-cost taster sessions at the club and/or community sports day events, offering incentives via the FAB Card and supporting pathways to the London Youth Games cricket competition.

The Committee are committed to working collaboratively with Greenspaces and Leisure and the wider Fit & Active Barnet Partnership to explore opportunities for further collaboration e.g., investment opportunities that support some of the most inactive groups in the borough (BAME, Older People, Women and Girls, Disabled People and Children and Young People, particularly from deprived communities in the borough) to be physically active.

Over the years with the clubs (football and cricket) at the Memorial Playing Fields growing in member base, we have seen many of them become more and more successful within the junior age groups; A dream come true as you can imagine but one area where we are starting to struggle considerably is the condition and standard of the facilities itself. On the field, the Memorial Playing fields is self-sufficient within the funds we gather through year-on-year revenue, but off the field is where we cannot match the standard the teams and community are setting on.

The Clubhouse, built in 1940, now has many issues relating to age and maintenance is an enormous challenge.

The roofing has substantial wear and tear, now to a point where any severe weather causes flooding within numerous areas of the clubhouse itself.

Our showers facilities are no longer fit for purpose; they have not been upgraded since the original design in 1940 with a deep base 'old football' style bath with shower heads above. Unfortunately, we cannot provide shower facilities for our Women or children as they do not conform to ECB or FA standards due to the non-segregation and safety. This is a source of constant concern for us, not only because of the large junior member base but also now that we cater for a Womens team playing in the ECB Women's Premier League improvements to the showers and toilets have become a matter of urgency.

The Changing rooms themselves are dilapidated, again with no major renovation since 1940 they do not conform to the requirements of either governing body, (the ECB and FA) either in terms of size, positioning or sanitary provision.

As the grounds are well known within the local community and are always open and in use be it for sport, social walks, or even social events; we want to make it a sports and social hub for the entire Barnet community. The major concern we have is that if we do not upgrade our changing room and shower facilities then the sports clubs and teams, be it adult or juniors may not be allowed to enter in their respective competitions in the years to come. With there being a spotlight on Safeguarding and Health and Wellbeing in sport, we feel it is something that needs to be addressed immediately.

16 Benefits

It has been said by teams visiting the Memorial Playing Fields, "you have a lovely ground, as long as you're facing away from the clubhouse". Indeed, the sheer size of the ground opens up its use for not just individual matches, but large sporting festivals and competitions involving multiple matches. In winter, 3 senior 11-a-side and 4 7-a-side matches could be played simultaneously. Similarly a schools cricket festival in summer could run 8 or 9 8-a-side matches at the same time. Sadly, our changing facilities are not only too small but also too dilapidated to accommodate anything more than 2 senior matches at one time in either season. This disparity between the quality of the playing area and the necessary changing/social provision is what prevents the ground realising its potential to be a leading sporting venue in Barnet.

There is currently huge demand for good quality venues for borough and county level cricket matches at junior level, particularly if a venue has more than one cricket square available. Likewise, good quality, well maintained grass football pitches are also in short supply and the recent addition of an AstroTurf pitch will attract further footfall to the facility. Being able to provide access to higher levels of competition is crucial to the growth of any sporting club; it shows its members a higher level of performance that they can strive towards. We believe that there should be no ceiling to this. The grounds largest tenant, OECC is now in a position where a further promotion achieved through the higher level of sporting achievement would go unrewarded: our changing facilities are simply not to the standard required in the higher divisions by the organising league. As per the 'Facility's Marking' document attached to this application, it shows that any clubs playing at the Memorial Playing Fields will in fact not be eligible for higher divisions of the Hertfordshire league structure.

The various tenants that use the ground are all extremely well run by their volunteers and can all claim to be "punching above their weight", the lack of investment in the facilities is now the only thing holding them back. Currently, some 2,000 members of the Barnet community will use the fields for some sort of sporting activity on a regular basis each year. We believe this could be **AT LEAST** doubled – if the main building was improved to the level we are looking to provide through this project. From a cricketing perspective the ground has the potential to be of use to families in both the Middlesex and Hertfordshire County catchment areas – an added benefit of its position on the county boundary between the two.

So, what if the ground were simply to continue as it currently operates with the existing clubhouse facilities? Certainly, the potential of such a large sporting field would go unrealised and the many members of the Barnet community that would take advantage of such capacity would either visit another area or not bother to travel at all. Also, many would be put off participating in a sport at their local ground because the changing facilities are too unattractive. There is also the very real possibility that the age of the building, coupled with the usual weathering and wear and tear, would at some stage in the near future necessitate a major repair involving sums of money that the business model will not be able to cope with and the building then becoming unusable. The consequences for the tenants, providing opportunities to engage in sport and exercise, would be catastrophic. A very real scenario that faces us immediately is the fact that **Women's and Junior sport may not be allowed to continue at the Memorial Playing fields** as we cannot provide adequate showers under FA and ECB regulation. In fact, sporting activities may eventually have to be suspended at the ground altogether if the only building on site is deemed unusable on health and safety grounds - a very real possibility given its current dilapidated condition.

Future plans for the ground include an Indoor Cricket Centre that will enable the local cricketing community to practice all year round (there is a severe shortage of indoor cricket facilities as well). We are also striving to attract the interest of major sponsors – such as the neighbouring Sky Elstree Film Studios – in partnering with us to improve and develop the site further. (The 5 years develop plan has been provided as an attached document.)

Finally with the proposed renovations, the Memorial Playing Fields would have a real possibility to further develop into a Sport Facility for the whole Barnet Community. Opening doors to provided a free space for local adults and children to play sport for free along side our tenants and clubs bringing to light the vision for both Council and tenants.

(Pictures of the facilities can be found in the appendix)

Below are a number of testimonials and comments from families of the cricket club testifying to the popularity of the ground with the local community and the need to improve the changing rooms are provided below:

“To whom it may concern, both my son and daughter have been introduced to and learnt cricket at Mays Lane, home of Old Elizabethans. The club fosters all backgrounds, develops children across a range of abilities and is a hub for the community (and a great place for cultures to mix that wouldn't otherwise do so). The club deserve good facilities and I do hope the changing rooms can go ahead giving boys and girls a good environment for this great club and game”. **Mr James, Wentworth Road, Barnet.**

“I've been coming to OECC since the merger between Barnet B's Cricket Club, Underhill and Elizabethans Cricket Club as both a helper and a parent of 2 boys and a girl, all of whom have taken their first cricket steps at OECC. The quality of the cricket and the coaching has always been very high. At present there is a real push to develop girls cricket which is great to see. All the family has enjoyed sunny Friday nights at the club. I'd very much like to see improvements to the clubhouse to keep pace with the recent improvements to the ground and the cricket coaching and also to match the ambition of the club. At present, the facilities are not very welcoming to the girls section of the club. So it would be great if funding could be found to develop the clubhouse and in particular the facilities for the girls and ladies who enjoy cricket at the club”. **Mr Aitken, Oakleigh Road, Whetstone.**

“OECC has become a massive part of our family life, with three of my children taking part in cricket. The children have made great progress in the sport and formed lasting friendships. The coaches motivate and encourage children to play as part of a team and enjoy cricket. The ground is in a perfect location but could really benefit from renovation of the club house, also to resurfacing of the car park. We look forward to returning this summer”. **Mrs McHugh, Mays Lane, Barnet**

“Cricket is a critical aspect of our son's life; he is very passionate about the sport and it really helps him both physically and mentally. Old Elizabethan's Cricket Club provides a great platform for him and others of all cricketing abilities, be it boys or girls and from any background, to learn and play cricket. It's helped our son with a number of other skills as well as just cricket - to be a team player, developing leadership and communication skills, to keep going even when the chips are down, and the list goes on. It's a really good community club, welcoming of all. All the staff/volunteers, from players, coaches to back office helpers, really go above and beyond to create a really great atmosphere and environment with the limited funds that they have. My family and I would certainly welcome any grant/funding that could be provided that would help with the much needed renovation of some of the facilities”. **Mr Datta, Darlands Drive, Barnet.**

“Over the last four years or so my son has been representing the club and has thoroughly enjoyed it. There is no doubt that this club and the management have helped him develop his confidence and also physical fitness. We can see the growth of the club with so many enthusiastic players (juniors as well as seniors). As a parent I see good coaches and volunteers to help the players when needed with training and all other required needs. At the same time there is much help needed to improve the ground infrastructure which isn't now adequate even with the volunteer's contributions. It would be of great help and encouragement to the club and all future generations that are going to be part of this club to grow with some kind of support from the council and government”. **Mr Parsaboina, Dugdale Hill Lane, Potters Bar.**

“Thanks for your effort in improving the conditions at the cricket ground which has become so important to the community in Barnet. We moved to this area in 2019 and were stuck indoors without being able to interact with other residents in the area for most of 2020 and 2021. In the last year and a half the Cricket ground has been an integral part of our community. Boys and Girls have been learning cricket in the nets as well as having competitive games throughout summer. The changing rooms are bit dated and will be great if they can be renovated. The kids are really looking forward to another season in 2023 where they can continue from where they left off and I am looking forward to the annual Dads and Lads game where everyone is cheering for Lads to win - including Dads”. **Mr Nabera, Kenerne Drive, Barnet.**

“It's been a 3 year association with OECC and I don't recall a week that has passed by without Anirudh, my 17 year old, remembering the pitch, score boards, coaches and the warmth and support at OECC.

OECC has inspired, supported, mentored and provided him excellent opportunities to grow as a strong cricketer, and finely scaled his abilities to represent the club and Barnet-Enfield borough. With training nets available thru spring, summer and autumn months, it forms a critical part of his continuous development and the changing rooms provide safe space for donning the club's colours, which he wears with absolute pride. Rob, Steve, Nav P, Nav A and other seniors members are really committed and focussed to making OECC, the best in the borough. It is also noteworthy that the club now has spread wings to women's cricket as well. It has inspired girls in the area to become budding women cricketers and take up the sport seriously along with their brothers. It would be great for the club to look for opportunities and additional funding to refine and revamp the facilities to better conditions to accommodate both men and women's needs in the club and that expensive training kits, materials, score boards can be safe guarded without the worry of UK weather”. **Mr Terdal, Quinta Drive, Barnet.**

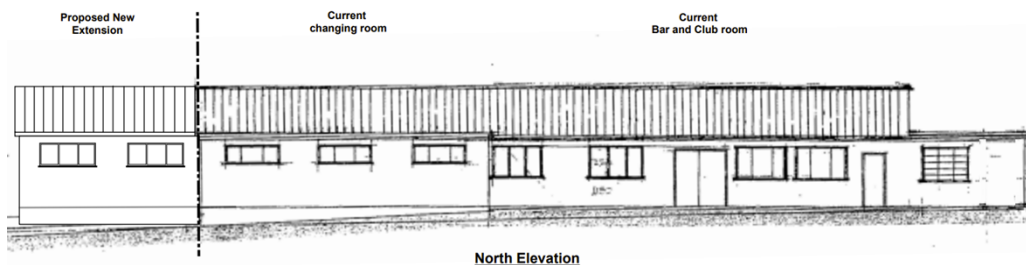
“The OEs ground is an integral part of our life. It is what brings us as a family a huge amount of joy from April through till October every year. It does this through the community spirit it invokes in us all through the cricket and the social events. It brings so many children of all ages and adults together, for many wonderful days and evenings spent there. We use it for our children, who benefit immensely. Their cricketing passions are channeled through the coaching offered at the ground and they form real bonds with each other as well as with the coaches and the whole community of parents and children alike. They learn so many life skills through their time on the ground - team play, focus skills, sportsmanship skills, physical and mental strength, to name a few. We as parents also use it for our own health goals - using the ground to walk/jog on and also to strengthen our community bonds and relationships. We drive past during the winter months and long for the better weather when the ground is more accessible and the community comes alive once again. We would be deeply grateful for any help you are able to obtain to improve the ground facilities. Thank you for all your efforts towards this”. **Reshma, Darlands Drive, Barnet.**

18 *Proposed renovation*

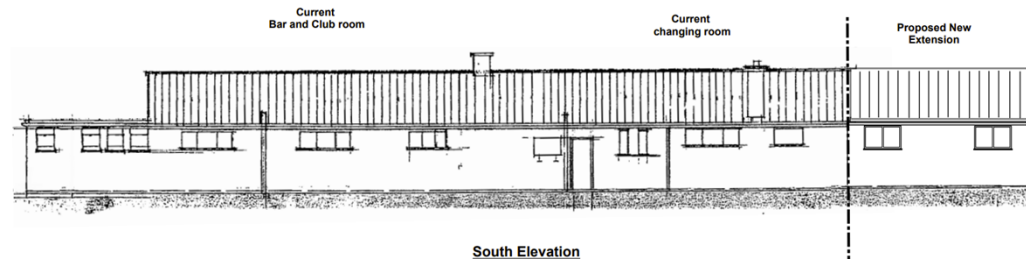
The proposed project is to redesign and extend the changing room facility to incorporate 4 new ECB/FA compliant changing rooms, with segregated showers for each changing room as well as 3 officials changing rooms (with separate toilets and showers) and a renovation of the toilet facility in the building. This would allow us to provide men, women and juniors of all ages and abilities, with the ability to change and shower after sports training or matches in an environment approved by the sport's governing bodies.

Below are the professional plans that we have had produced which illustrate the proposed improvements. (Separate drawing files have been attached)

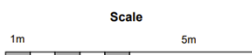
Extension Elevations and Roof Plans



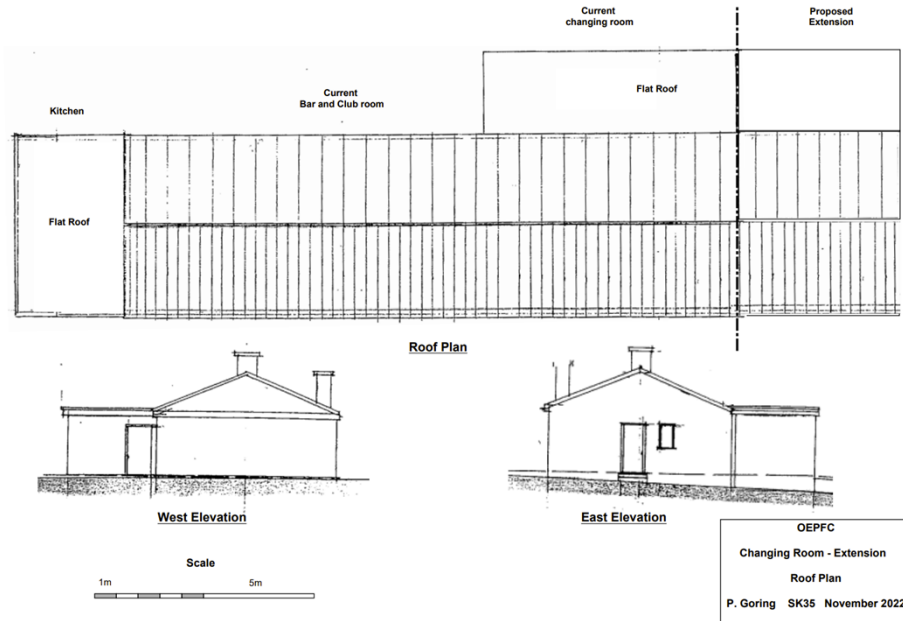
North Elevation



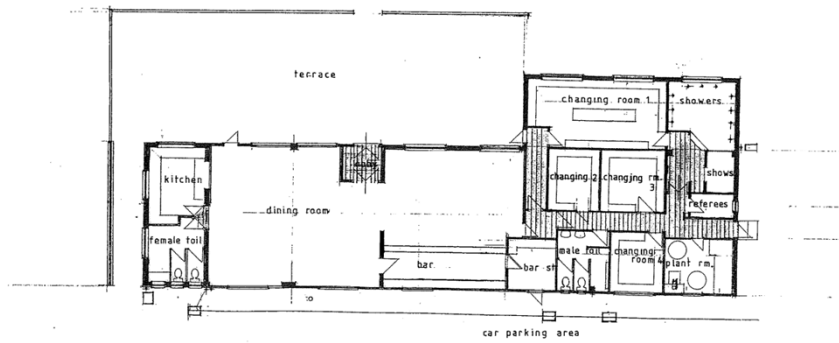
South Elevation



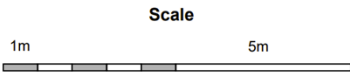
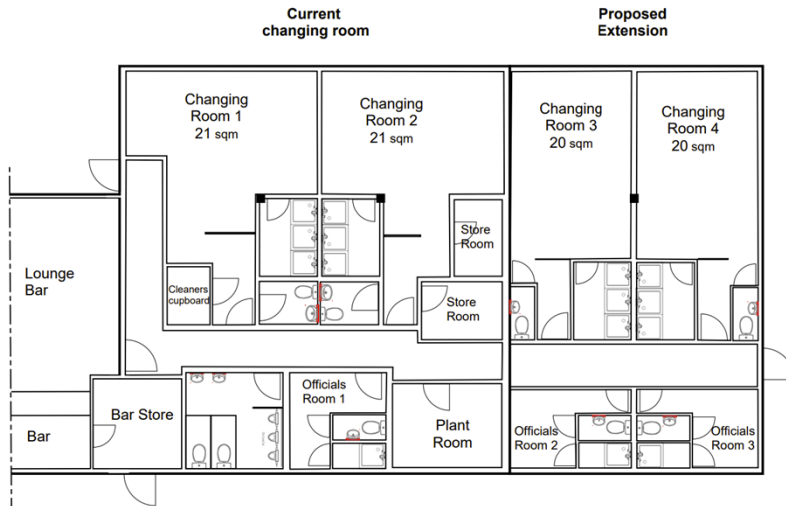
OEPFC
Changing Room - Extension
Elevations
P. Goring SK34 November 2022



Current Floor Plan

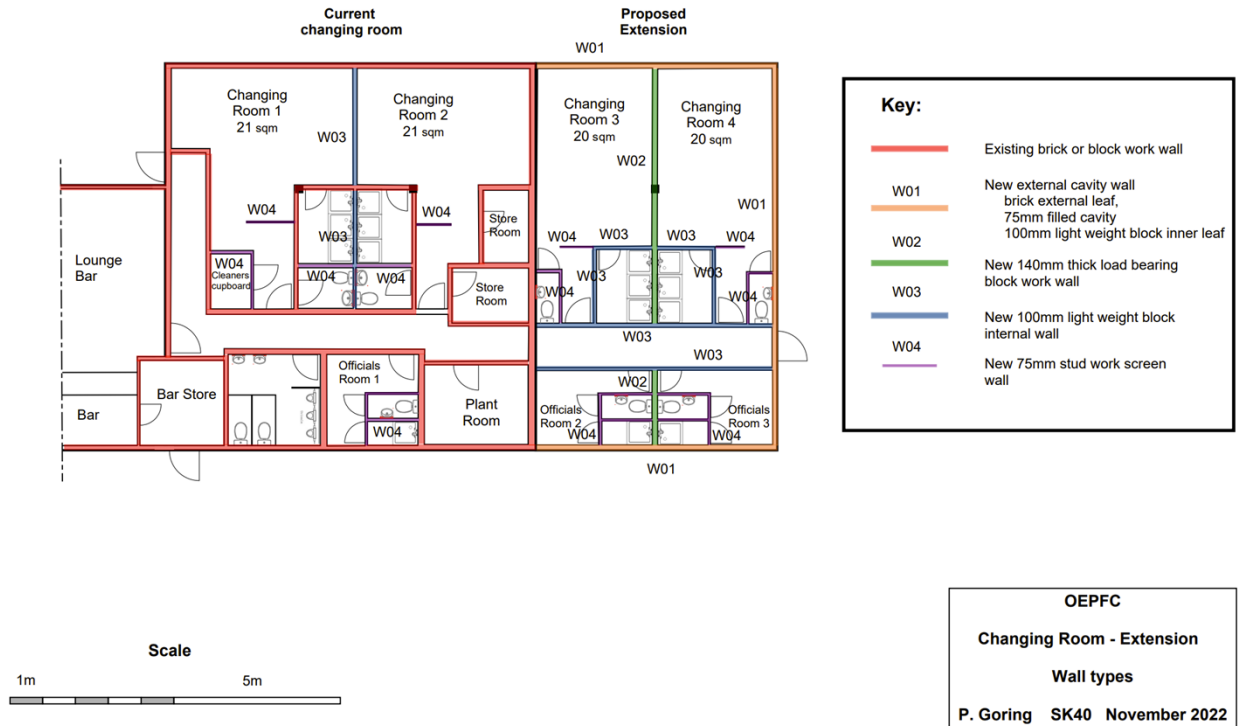


Extension floor plan



OEFFC
 Changing Room - Extension
 General Arrangement
 P. Goring SK33 November 2022

Extension Wall types



19 Costs

We have completed a tender process in which we invited a number of local construction companies to provide a cost proposal for the project. Two companies have been chosen and the cost proposals have been included in the document set. These are KM Shinnock Ltd of Potters Bar, and RB Maintenance Ltd of Barnet.

In line with sustainability we will look to tender with local companies to reduce the carbon footprint with regards to transport and travel. Alongside this we will also look to utilize energy saving equipment in building works and components of the actual project itself e.g. heating and lighting. **On award of this grant the next stage would be to seek Planning Permission from Barnet Council and commence surveys and build work.**

The total project cost is £204,935.88. We as a committee have agreed to raise £36,935.88 ourselves towards the cost of the project through existing funds, fundraising activities scheduled this year through our sports teams and some volunteer work through our skilled membership base to complete certain project work to reduce the cost. We believe this is a substantial commitment for organization of our size.

We have approached numerous bodies, including the ECB, Middlesex Cricket, and Sport England for support with funding for this project, but all have **unfortunately** informed us that there are no funding streams available currently. (Correspondence can be found in the appendix)

Therefore, the request from the NCIL Committee is for a grant of £168,000 to successfully renovate the complete changing room and shower facility at Old Elizabethans Memorial Playing Fields.

Memorial Playing Fields





Old Elizabethans Cricket Club







Summer Soulstice



Shower and Changing room Facilities







Date:- 20th March 23
 Client:- Nav Parkar
 Clients Address:-
 Property for works:- Old Elizabethians Cricket Club, EN5 2AG
 Start date:- TBC
 Finish date:- TBC
 Quote No: 5268

Work to be undertaken	Quote Cost	Code	RB Maintenance Comments	Client Properties Comments
Preliminary/Facilitating Works		0		
Relocate existing potacabins	£2,160	0.1		
Disconnect & remove existing electrics to changing rooms	£1,920	0.2		
Disconnect & remove plumbing to shower area	£2,813	0.3		
	£6,893			
Ground Wprks		1.0		
Excavation & Drainage		1.1		
Remove existing paving	£2,160		88sqm	
Excavate new main drainage. 100 diameter pipework average depth 750mm	£3,495		50 linear m	
New preformed UPVC manholes to suit	£5,385		4 no	
Supply & install new 3000i septic tank	£2,985		1 no	
Drainage connections within footprint of building	£2,663		1 item	
Drainage connections within footprint of new extension	£1,913		1 item	
Foundation to extension		1.2		
Trench foundation 600mx600m below existing ground	£4,320		50 linear m	
Blockwork wall to ground floor level, nominal 900mm	£6,225		50 linear m	
Fill to suit floor level	£10,965		40 cubic m	
Concrete floor, nominal 100m on hardcore with UPVC membrane and A252 mesh	£5,903		80sqm	
Damp proof course to foundation	£1,163		50 linear m	
	£47,177			

Envelope		2.0		
External walls		2.1		
W01 - Brick & block cavity wall with insulation	£15,975		80sqm	
UPVC window, 1,800mm wide x 600mm high	£1,500		2 no	
UPVC window, 1,200mm wide x 600mm high	£1,365		2 no	
Relocate existing fire door	£548		1 no	
Roof		2.2		
Timber structure with twin waterproof plywood	£13,050		90 sqm	
New fascia boards to perimeter with gutter	£3,270		45m	
Membrane roof to new & existing roof	£8,344		125 sqm	
	£44,052			
Internal Finishes		3.0		
Internal walls & partitions		3.1		
W02 - Blockwork 140mm	£1,913		35sqm	
W03 - Blockwork 100mm	£8,265		100sqm	
W04 - stud work with plasterboard	£5,433		90sqm	
Internal Doors		3.2		
Existing changing room	£2,861		7nr	
Bew extension	£1,635		4nr	
Toilet doors	£2,861		7nr	
Shower doors	£1,688		7nr	
Wall finishes		3.3		
Allowance for finish to existing; Masonary paint	£6,446		450sqm	
Allowance for finish to extension; Masonary paint	£3,746		250sqm	
Waterproof board to existing showers	£4,781		75sqm	
Waterboard to extension showers	£7,969		125sqm	

Floor finishes		3.4	
Insulation & tongue boarding with UPVC dpm to existing changing room	£4,478	120sqm	
Insulation & tongue boarding with UPVC dpm to extension	£2,985	80sqm	
Water-proof finishes to toilets & showers	£2,175	50sqm	
Epoxy resilient flooring to changing areas	£2,055	150sqm	
Ceiling finishes		3.5	
New plasterboard to all ceilings	£4,320	200sqm	
Allowance for finish: Vinyl matt paint	£1,958	200sqm	
	£65,569		
Fittings, furnishings & equipment		4.0	
Fit out changing rooms		4.1	
Benches to changing rooms	£5,400	70m	
General Joinery	£1,688	1 sum	
	£7,088		

Price agreed for above works	£170,779
-------------------------------------	-----------------

VAT at 20% will be added to this price	£34,156
--	---------

Total	£204,935
--------------	-----------------

Payment terms	
Deposit payment prior to start @ 10%	£20,493
Payment at the start of works @ 15%	£30,740
Payment 3 weeks following start of works @ 15%	£30,740
Payment 6 weeks following start of works @ 15%	£30,740
Payment 9 weeks following start of works @ 15%	£30,740
Payment 12 weeks following start of works @ 15%	£30,740
Payment 15 weeks following start of works @ 10%	£20,493
Payment 3 months following completion @ 5%	£10,247

Signed (on behalf Client) _____ Date _____

Signed (on behalf RB Maintenance) _____ Date _____

ESTIMATE

KM SHINNICK

Sherington
Selwyn Avenue
Hatfield
Hertfordshire
AL10 9NP

Office: 01707 274714
On Site: 07772 123789

Email: karenshinnick@gmail.com

To:
Peter Goring The Playing Field Company
Changing Room Upgrade

Date:	11/05/2023
--------------	------------

Description	Total
<u>Re: Old Elizabethans- Club House, Extension and Refurbishment:</u>	
<u>Facilitating Works Estimate:</u>	
<u>Facilitating Works:</u>	
Relocate existing portacabins	
Disconnect and Remove, existing electrics to changing rooms	
Disconnect and Remove, existing plumbing to shower area	4,600.00
<u>Building Works Estimate:</u>	
<u>Ground Works:</u>	
<u>Excavation and Drainage:</u>	
Remove existing paving	
Excavate new main drainage	
New preformed UPVC manholes to suit	
Supply and install new,3000 septic tank	
Drainage connections, within footprint of building	
Drainage connections within footprint of new extension	16,800.00
<u>Foundation to Extension:</u>	
Trench Foundation 600mm wide 600mm below existng ground	

Description	Total
Block work wall to ground floor level, nominal 900mm Fill to suit floor level Concrete floor , nominal 100m on hardcore with UPVC membrane and A252 mesh Dampp roof course to foundation	15,200.00
<u>Envelope:</u>	
External Walls	
W01-Brick and Block Cavity- wall with insulation UPVC window, 1,800mm wide x 600mm high UPVC window, 1,200mm wide x 600mm high Relocate existing fire door	11,460.00
<u>Roof:</u>	
Timber structure with twin waterproof ply wood New fascia boards to perimeter with gutter	16,200.00
<u>Internal Finishes:</u>	
Internal Walls and Partition	
W02 Blockwork 1400mm W03 Blockwork 100mm W04 Blockwork 100mm	15,300.00
<u>Internal Doors:</u>	
Existing Changing Room New Extension Toilet Doors Shower Doors	6,250.00
<u>Wall Finishes:</u>	
Allowance for finish to existing, Masonary paint Allowance to finish to extension, Masonary paint Waterproof board to existing showers Waterproof board to extension showers	19,300.00
<u>Floor Finishes:</u>	
Insulation and tounge boarding with UPVC dpm to existing changing room Insulation and tounge boarding with UPVC dpm to extension Waterproof finishes to toilets and showers Epoxy resilient flooring to changing areas	22,750.00

Description	Total
<u>Ceiling Finishes:</u>	
New plasterboard to all ceilings	
Allowance for finish, Vinyl 1 matt paint	14,000.00
<u>Fittings, furnishings and equipment</u>	
Fit Out Changing Rooms	
Toilet and Handbasins	
Shower heads and tray	
Benches to changing Room	
General joinery	18,000.00
<u>Services:</u>	
Disposal Installations	
Water Installation	
Heart source- electric radiators	
Ventillation	
Commissioning	14,000.00
Main Contractors Prlimanaries	17,436.00
Main Contractors d&B risk	3,487.20
Main Contractors OH&P	8,718.00
If you have any queries, please do not hesitate to contact Kevin, at the above	
All prices are subject to vat at the current rate	
TOTAL	203,501.20

Registered Address: 33 High Street, Old Harlow, Essex, CM17 9JA.
Registered in England & Wales: 09645665. VAT No. GB 233 4210 53.

MEMBERS CIL FUNDING REQUEST FORM

AREA COMMITTEE – MEMBERS CIL FUNDING REQUEST	
MEMBER	Councillor Dr Philip Cohen
DATE	15 March 2023
WARD	East Barnet
cross-ward applications	N/A
SCHEME SUMMARY	
<p>This bid is for funding to enable the construction of a new inclusive playground at Victoria Recreation Ground, New Barnet. The working group has called this project “Fair Play Barnet”. This new playground would be next to the existing playground in Victoria Recreation Ground and near to the New Barnet Leisure Centre.</p> <p><u>Background</u> In early 2022 the Greenspaces Team at the council were approached by an interested individual (Deborah Gundle from The Seneca Trust) who wanted to provide a playground for people (children and adults) with disabilities. The individual said that they would be able raise the funding for the equipment and installation, their key ask from the council was for a location. Victoria Recreation Ground was identified as the most suitable site as it has capacity for another playground and has the leisure centre next door which has parking and facilities including toilets.</p> <p>The concept is that Fair Play Barnet is a playground where everyone is able to play together regardless of ability. The plan is that the equipment will be suitable for children and adults to use. Able bodied people will also be able to use the equipment, but the main focus is on disabilities. We believe this this will be the first playground of this type in this country. SCOPE launched a campaign “Let’s Play Fair” in 2022 about providing more inclusive playgrounds Let's Play Fair Disability charity Scope UK and it has recently been covered by BBC Newsround https://www.bbc.com/newsround/64188342 In Barnet there is nothing like this playground or most of the equipment contained in the playground.</p> <p>The working group for this project comprises of the Greenspaces Team, the council’s play contractor, Kompan, and the third party (Deborah Gundle and her colleagues).</p> <p><u>Playground Design</u> Attached is the design that was included in the recent public consultation. To develop this playground, we have worked with a range of people who have or who care for people who have additional needs. The design includes equipment that: rocks, swings, spins, involves sound, climbing and slides, touch and sitting. The approximate dimensions of the draft design are 40 metres wide and 61 metres long.</p> <p>This new playground would be owned by Barnet Council and the council will inspect and maintain it.</p>	
Funding Request (£)	£100,000
CIL Eligibility	The relevant CIL eligibility criteria, which this project meets is “The charging authority may use the CIL to which this regulation applies, or cause it to be used, to support the development of the relevant area by funding—

	<p>(a) the provision, improvement, replacement, operation or maintenance of infrastructure”.</p> <p>This project is for the provision of a new inclusive playground, which is an improvement to Victoria Recreation Ground. Barnet Council’s Greenspaces Team has worked with The Seneca Trust on this project, which is explained further in the “Community Benefits” section.</p> <p>A public consultation has taken place on this project, which is explained further in the “Community Benefits” section.</p>
Area Committee priorities	<p>The relevant draft Area Committee priorities are Community Engagement and Public Health.</p> <p>The relevant priorities of the Barnet Plan “Caring for people, our places and the planet: Our plan for Barnet 2023-2026” are:</p> <ul style="list-style-type: none"> - Caring for People – creating a more family friendly borough, giving our children and young people the best possible start in life - Caring for our Places – becoming a borough of fun - Caring for the Planet – looking after our precious park ... and to make them happy places to have fun, relax and improve our health and well being - Engaged and Effective - give more power and resources to community groups and voluntary, charity and faith organisations to tackle and solve local issues, recognising and valuing their local knowledge and expertise.
Who will deliver the scheme	Greenspaces, Barnet Council.
Community Grants <i>(if applicable please confirm this is included with the application)</i>	N/A
Feasibility Study only	N/A
BUDGET & DELIVERY	
<p><u>Budget</u></p> <p>During the development of this project Kompan, Barnet Council’s play contractor, has provided estimates of the costs of various designs, which have ranged up to £550,000. The working group has said that the maximum that should spent on the project is £500,000 and that the final design of the playground will be within this budget. The total cost of this project will include all the equipment, surfacing, fencing and Barnet officer time.</p> <p>The total project cost for Fair Play Barnet is more expensive than other playground projects in Barnet, this is mainly because the equipment is being sourced from many different supplies as to date playground manufacturers have not made a wide range of inclusive equipment. As a result of this project, Kompan are considering increasing the range of inclusive equipment that they stock.</p> <p><u>Funding</u></p> <p>The majority of the funding for this project is coming from third parties. Deborah Gundle from The Seneca Trust, and her team have secured £400,000. The project is requesting £100,000 from North Area Committee, to bring the total project fund value to £500,000.</p> <p><u>Delivery</u></p>	

Barnet Council's Greenspaces Team will order this work from it's appointed play contractor, Kompan.

Quotes provided with the application

N/A

Timescale for delivery

<i>Action</i>	<i>Date</i>
Working Group discuss outcomes of public consultation and design changes	March 2023
Kompan redesign and price scheme	April 2023
Working Group reviews plan and cost, to ensure fits within funding secured	May 2023
Order placed with Kompan	June 2023
Construction of Fair Play Barnet	Autumn 2023

Council Service Delivery

Matthew Gunyon, Head of Greenspaces
Matthew.gunyon@barnet.gov.uk

Dependencies/Risks

Risk - Insufficient funding is secured to deliver the project. The Seneca Trust has secured £400,000, and the project working group, including the playground contractor, has agreed to develop a design within the total fund that is secured.

Risk - Externally sourced equipment increases in cost and/or there is a delay in the equipment being delivered, and therefore a delay to the project. To mitigate this risk Kompan is in regular contact with potential suppliers and the project working group regularly reviews the cost of the project.

VALUE FOR MONEY

The Seneca Trust approached the council about building an inclusive playground. They have secured £400,000 to build the playground, which is 80% of the budget that has been identified for this specific playground. This funding request is for £100,000, to bring the total budget to £500,000.

For comparison purposes the refurbishment of the fenced playground at Tudor Sports Ground, which is currently being carried out by Kompan, is costing around £150,000, and the construction of the new playground in 2022 by Kompan, at Brook Farm Open Space cost around £200,000.

No ongoing revenue costs

There are no ongoing additional revenue costs associated with the project. The maintenance of the new inclusive playground can be supported from existing revenue budgets.

COMMUNITY BENEFITS

A public consultation on the Fair Play Barnet playground proposal was carried out for six weeks in February/March 2023. In total the following were received: 24 responses to the professional questionnaire, 16 responses to the potential users questionnaire, 71 responses to the family and friends questionnaire and 7 direct comments.

In summary:

- In all three questionnaires respondents were asked if they liked the layout of the playground:

<i>Answer</i>	<i>Responses</i>
Yes	71.05%
No	1.32%

Don't Know / Not Sure	27.63%
TOTAL	100.00%

- The professional and family and friends questionnaire asked if you would visit an inclusive playground:

<i>Answer</i>	<i>Responses</i>
Yes	88.89%
No	0.00%
Don't know / Not sure	11.11%
TOTAL	100.00%

- The main themes from the comments received in the questionnaires and directly were:
 - Pleased and excited with this proposal, it will appeal to a wide range of people, it feels like the plans have made an inclusive space, great to create a space where all children can play together.
 - Have you considered that the facilities could be used by elderly people – this will be considered by the working group.
 - Toilets – what facilities? Changing Places toilet?

In the New Barnet Leisure Centre there are the following toilet facilities:

- Accessible toilet in Reception Area
- Changing Places toilet and Accessible toilet in the Main Changing Village – reception will let people through to use these. The centre operator is arranging for the Changing Places Toilet to be listed on www.changing-places.org and will arrange a sign.
- Refreshment options locally? – the café in New Barnet Leisure Centre opened in March 2023.
- Private transport - provision of disabled parking spaces, the provision of car parking spaces and the ability to park coaches and minibuses.

Officers are working internally to identify the likely requirements, the existing provision and what can be done to accommodate these requirements. This includes:

- Installing new disabled parking bays on Lawton Road by the park entrance, which would not cause disruption for the general public but would create additional parking capacity for Fair Play Barnet users.
- Reconfiguring the layout of the Greenspaces car park on Park Road, to include disabled bays.
- Options at the New Barnet Leisure Centre and car park, with the leisure centre operator.

- Public Transport

The 384 bus route travels along Lawton Road, which is next to the leisure centre and the proposed playground. The council is currently working with TfL to increase the accessibility of this bus route. Other bus routes which are nearby are: 184, 307, 383, 326 and 626.

The area in Victoria Recreation Ground identified for the inclusive playground is currently grass. All the trees in the area will remain and will not be affected.

In the development of the inclusive playground we have tried to take into account as many disabilities and requirements as possible. To do this the working group have spoken to individuals, carers, family, friends and professionals, as well as seeking feedback from organisations. An example of this is that only one entrance/exit gate is proposed, so it is easier to keep an eye on someone, unlike a standard playground where two gates are installed.

Lead Officer Review - only	
Lead Officer	
Date	
Assessment & Recommendations	



Area Committee – Neighbourhood CIL Funding Application Form

Title	Age UK Barnet Flower Arranging for People Living with Dementia
Raised by (Councillor):	Richard Barnes
Ward:	Barnet Vale
Member Request:	Richard Barnes
Funding Requested (£):	£4,000
<p>In consultation with (e.g. named Officer):</p> <ul style="list-style-type: none"> • Is within the parameters outlined in CIL statutory and regulatory definitions • Falls within the CIL Funding Priorities agreed by the relevant Area Committee • Links to priorities in any existing Council policy or strategy and/or whether any insight and intelligence may support the application • The scheme has considered any potential impact on the Council's Strategic portfolio including those considered for strategic CIL funding • The scheme has no ongoing incremental revenue costs to the Council • That the scheme budget is forecast accurately • That the scheme deliverability has been assessed to ensure it can be resourced and successfully implemented • That the scheme outcomes and benefits have been assessed including benefits for the wider community and/or including those with protected characteristics under the Equalities Act 2010 <p>And Area Lead Officer (NAME), on (DATE):</p>	<p>Funding to allow weekly sessions run by The Flower Bank, based in Barnet Vale, with people living with Dementia.</p> <p>These sessions have been run in the past but regular funding is required to allow them to continue. The requested funding will allow 40 sessions to run over the year.</p> <p>Age UK Barnet are aware of many people with a diagnosis of dementia who find it difficult to source meaningful activities to join. We currently run a weekly flower arranging session which is widely enjoyed, and we have had two participants join who have a diagnosis of dementia. Their needs are slightly different to the rest of the group and we have needed to provide extra support to sustain the sessions. Therefore we felt that having a session dedicated to this cohort of people, where they can be well supported by volunteers who understand their needs, will make sense. Clients may be able to continue with this interest independently once they have participated in the classes. We will be able to support 8 participants each week. It will be a great volunteering opportunity and we can provide Understanding Dementia training either through ourselves or via the online sessions run by Dementia Club UK. The tutor is very keen to support this initiative and is able to deliver suitable</p>

	<p>sessions and provide all equipment and flowers. We have looked at several local venues but many are booked on Friday mornings when the tutor is available. This venue (Friends Meeting House in Leicester Road, New Barnet) is available and fully accessible, and will also be familiar to some participants as we use it for our monthly Dementia Café sessions. There is unrestricted local on street parking, and it is close to a number of local bus routes, and a 10/15 minute walk from rail and tube services.</p> <p>Where clients are best supported by a carer or family member the venue is large enough to accommodate this. All participants will need to be able to attend independently or be accompanied by a carer – we will not be able to provide personal care, but obviously carers can stay and have refreshments and chat to other carers while the session is going on. We would hope to have occasional sessions where support from a Dementia Advisor can be offered.</p> <p>Detailed costings are shown below</p>
Any additional information (please list any documents here to be published with the agenda, or circulated to the Committee):	



Type of cost	Description of costs	Total cost £ (incl. VAT)
Tutor and equipment including flowers		70.00
Hall hire	3 hour min hire	50.00
Volunteer expenses	5 vols per week @approx £4 per person	20.00
Refreshments	Basic tea/coffee	5.00
Total weekly cost		£145 per week
<p>Cost of session to participants £6 per session.</p> <p>Maximum of 8 per session, income max of £48</p> <p>Net cost - £97 per session.</p> <p>Running for 40 weeks per year term time only = £97 x 40 = 3800</p>		<p>£97 per session</p> <p>£3800</p>
<p>Marketing/promotional materials - £200</p> <p>Term time – 40 weeks – total £4,000</p>		<p>Total cost £4000</p>